

Eugene Chapter

AMERICAN RHODODENDRON SOCIETY NEWSLETTER

MAY - JUNE 2009

CONTENTS

From the President	1
June Picnic	1
Editor's Byte	2
Hinsdale Garden Open Deay	2
Show Winners	3
Newport Garden Weekend	3
Hendricks Park Celebrates	4
Yakkin' at the Old Toolshed	5
Calendar	6



FROM THE PRESIDENT

This has been a busy two months for rhodo fans. Our own gardens need weeding and enjoying, two local shows, hosting two local shows, visiting gardens, attending out of town shows and the ARS National Convention in Everett. Washington. Wow!

Our Early Show and Awards Banquet at the Electric Station was well attended. A Citation of Service was awarded to Gordon Wylie and a Bronze Medal to Jack Olson to their delight and surprise -- both very well deserved! Emma Bowhan received a beautifully framed picture of R. 'Pawhuska' in memory of Tom. Her surprise and appreciation were evident.

For the May Show we were back at Valley River Center. Any comments pro or con? Was having the Plant Sale off site at the Lane County Fairgrounds good or bad? It was certainly successful. Please let board members know your thoughts by phone, e-mail, or at the June * Picnic.

The Hinsdale Garden east of Reedsport will be open on May 23 from 10:30 A.M. Until 4:30 or 5:00 P.M. According to Gordon Wylie who has spearheaded the restoration of the garden under the auspices of the Bureau of Land Management with assistance and cooperation from the Oregon ARS Districts. Member Galen Baxter was involved in the planting of the original garden over fifty years ago.

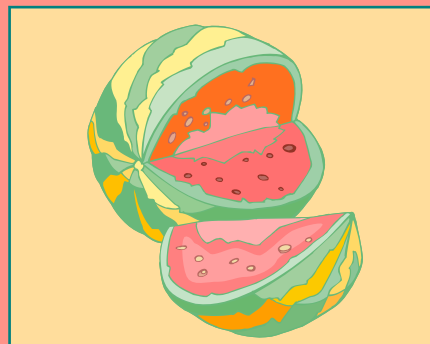
Something new for me: I have three vireyas on the windowsill. After two months they are still perky and seem to be doing fine. Is this the last of the Empty Nest Syndrome? Wish me luck! *President Helen Baxter*

CHAPTER PICNIC JUNE 7

This year we are meeting at the Lloyd Knox Water Board Park across the dam at Leaburg Lake at noon. Plans are to eat at one PM, have a plant exchange, and stroll up the road to view some, possibly all, of the old Phetteplace garden.

Please bring a main dish, salad or dessert to serve 8. Also bring a tablecloth (tables are rough) and your own plates, cups, napkins and silverware. Soft drinks and water will be provided by the chapter. No alcoholic beverages are permitted in the park.

And don't forget a plant for the plant exchange. New rules this year!



VISIT OUR WEB SITE AT: <http://www.eugene-chapter-ars.org>

President	Helen Baxter	461-6082
Vice President	Ted Hewitt	687-8119
Past President	Jack Olson	988-9133
Secretary	Paula Hewitt	687-8119
Treasurer	Richard Reed	747-6221

Directors & Terms

Leonard Frojen	2005-2009
Gordon Wylie	2006-2009
Terry Henderson	2007-2010
Nolan Blansit	2007-2010
Frances Burns	2008-2011

District 4 Director	Bob McIntyre	541-347 7269
Alternate Director	Dave Collier	503-663-7917

Standing Committees

Nominations	Harold Greer	686-1540
Programs	The Board of Directors	
Hospitality	JoAnn Napier	746-0828
Welfare	Nancy Greer	686-1540
Honors	Gordon Wylie	895-2864
Auction/Door Prizes	Rich Aaring	485-6013
Historian	Michael Robert	344-4391
Show Chairman	Leonard Frojen	485-0560

Chapter Media

Newsletter Editor	Frances Burns	896-3216
	rebfeb@hughes.net	
NL Circulation	JoAnn Napier	746-0828
Webmaster	Rudy Fecteau	344-6852
Web site	http://www.eugene-chapter-ars.org	
ARS NL	http://www.rhododendron.org	
ARS web site	http://ars.office.org	



PHOTO BY ALAN TROTT

"Bus 4920 #2. Be sure you get back on this bus!" With those repeated words seared in our brains, we cruised off from National Convention Headquarters in Everett to visit the Species Foundation and Botanical Garden in Federal Way, WA. It was a beautiful sunny day, and since there are no strangers in the ARS, conversation buzzed between rhodophiles from one end of the bus to the other. Weyerhaeuser's retired bonsai collection was brought back to the Species Foundation just for the convention tours.

Many species were in bloom as expert tour guides Steve Hootman and Dennis Bottemiller escorted us about, explaining development projects in progress and answering questions. I for one will return in the future to see how a massive tangle of uprooted stumps will have developed into a statuesque Stumperie of mossy wooden crags with rhododendrons and woodland plants growing as though in a primeval forest.

After a well organized lunch with a variety of box lunches filled with surprising goodies, we boarded Bus #2 -- you better believe -- and headed for Bellevue and the Northwest Perennial Alliance Garden. Much expansion since my last visit -- the splendid result of vision and hard work by volunteers.

Another day we toured the magnificent Meerkerk Gardens, hoping to see some of the fairies that reportedly dwell there. Ah, well, maybe next time! After a picnic lunch, we rolled off to Bill Stipes' beautiful home and garden and lastly to Frank Fujioka's well planned hillside garden on Puget Sound where many of his spectacular hybrids were blooming. We were very fortunate to see Jim Barlup's growing operation with his latest hybrids, as well as Jeanine Smith's garden, one of the finest in the Northwest, and enjoyed genuine hospitality at each garden.

A great convention it was! Eager to get back to our own gardens, we packed up pollen, plants and reams of notes, and drove home through heavy rain much of the way. One useful memento of the convention was the zippered name tag pouch. It's great for carrying labels, ink pencil and notes when hybridizing or labeling. Thanks to Don Smart and his committees for all the hard work to make us so welcome and so comfortable -- and making it look so easy!

**HINSDALE GARDEN UNDER RESTORATION -- OPEN FOR ONE DAY**

DATE/TIME: Saturday, May 23, 2009, 10:30AM to 3:00PM (or later if needed)

LOCATION: Approximately 5 miles east of Reedsport on Hwy. 38 opposite the Dean Creek Elk Viewing Area. The garden is on the north side of the highway between the roadway and the Umpqua River.

PLEASE NOTE: Visitors should first come to the East End Ranch House at the eastern end of the elk meadows on the south side of the highway. There they will sign in to provide coverage for any injuries (unlikely, but an important caution provided courtesy of our agreement with the BLM), and carpool to the small parking area for the garden. The parking area is not large enough for buses, but will accommodate vans or similar vehicles for folks traveling together.

The garden is not ADA accessible and the main part on the island requires negotiating a sloped path inside the highway guardrail and concrete block steps to a temporary footbridge. **Tide levels are favorable for crossing on the scheduled date.** The eastern, off island portion of the garden is more easily reached from the parking area via a generally flat dirt and gravel path. One may also see part of the main garden and house from that vantage. Because of protected animals in the area, please do not bring pets. There are no restroom facilities at the garden or ranch house, so visitors should use those available nearby at the off highway parking area for elk viewing about a mile west of the garden.

OTHER: The conditions noted above are straightforward and easily met. The Hinsdale Garden is a pleasant day trip from anywhere in Western Oregon, and this visit provides an opportunity to enjoy all the scenery of our ongoing Spring awakening and the plants, trees, wildlife, ocean views and such...the good life of Oregonians. We hope many will take advantage to explore and show support for a unique garden in a beautiful setting.

QUESTIONS: Gordon Wylie email, lgwone@gmail.com telephone, 541 895-2864

AND THE WINNERS ARE!

The Trophies for the 2009 May Show are as follows:

1. Best cut specimen, deciduous hybrid: R. luteum hybrid, Harold Greer
2. Best cut specimen, evergreen azalea hybrid: R. 'Sherwood Orchid', Harold Greer
3. Best cut specimen, species azalea: R. luteum, Harold Greer
4. Best yellow hybrid truss, Hymenanthes: R. 'Phyllis Korn', Harold Greer
5. Best orange hybrid truss, Hymenanthes: R. 'Fumi', Jack Olson
6. Best red hybrid truss, Hymenanthes: R. 'Martian King', Jack Olson
7. Best pink hybrid truss, Hymenanthes: R. 'Margaret Mack', Jack Olson
8. Best blue/purple hybrid truss, Hymenanthes: R. 'True Blue, Harold Greer
9. Best white hybrid truss, Hymenanthes: R. yakushmanum X campanulatum, Jack Olson
10. Best cut specimen species, Subgenus Hymenanthes: R. orbiculare, Jack Olson
11. Best cut specimen species, Subgenus Rhododendron or any Subgenus except Hymenanthes: R. campylogynum, Jack Olson
12. Best new Genus Rhododendron or Azalea truss or spray: R. 'Naselle' X 'Viennese Waltz', Jim Smith
13. Best previously show new Genus Rhododendron or Azalea truss or spray: R. 'Kubla Khan' X 'Cream Glory', Harold Greer
14. Best species R. degronianum ssp. yakushmanum truss: R. yakushmanum, Jack Olson
15. Best hybrid truss with one species parent: R. 'Shogun', Harold Greer
16. Best subgenus rhododendron hybrid: R. 'Conroy', Larry Jensen
17. Best elepidote (Hymenanthes) spray: R. 'Mindy's Love', Nolan Blansit
18. Best novice truss or spray: R. 'Mrs. Betty Robertson', Dean C. Burkhart
19. Overall - Best truss in show: R. 'Naselle' X 'Viennese Waltz', Jim Smith
20. Overall - Best spray in show: R. campylogynum, Jack Olson
21. Sweepstakes - Most points in show, Jack Olson
- 22a. Best artistic floral design by amatuer: "Small is Cool", Eldoris Cobban Age 8
- 22b. Best artistic floral design, open: "Rhodys at the Coast", Georgia Zahar
- 22c. Best artistic floral design by novice / junior: "Hike in the Park", Hayley Cohn (age 8)

June 26 -27 The Oregon Coast Gardening & Landscaping Expo returns to Newport at the beautiful Newport Middle School facility. All the proceeds from the Expo benefit Samaritan House Family Homeless Shelter of Lincoln County.

The Expo features over 55 plant sellers with selected garden art, tools, planters and more. Plus there will be 10 special seminar sessions featuring noted horticulture experts from around the Northwest.

The weekend concludes on Sunday, June 28th with the 6th annual Central Coast Secret Garden Tour & Garden Party this year focusing on gardens just a few miles inland from the coastal strip near Newport. For continual updated information go to our website www.oregoncoastgardeningexpo.com.

Jim Myers, Executive Producer
Oregon Coast Gardening & Landscaping Expo
541-270-0892

JOIN US JUNE 26, 27, 28, 2009

EUGENE CHAPTER ARS 2009 EARLY FLOWER SHOW

On Saturday, April 11, the Eugene Chapter held its Early Flower Show at the Oregon Electric Station with a good time being had by all. Though there were not many entries in the Azalea classes the racks for the Hymenanthes and Lepidote classes were filled with color. Four trophies were awarded with Terry Henderson winning the Best Azalea with R. 'Coral Bells', Steve Butdorf winning the Best Hymenanthes with R. 'Grace Seabrook', Laura Loucks winning the Best Lepidote with R. 'First Date', and Gene Cockeram winning the Best Species with R. schlippenbachii. After an excellent dinner and much camaraderie, we enjoyed the talk by Don Wallace from Singing Tree Gardens Nursery near Eureka, CA, about the development of the nursery and the new hybrids he is developing. In addition to a successful auction of several wonderful plants, we had a raffle for a terrific R. proteoides and two silent auction plants. Thanks to all who contributed to this fun evening.

HENDRICKS PARK CELEBRATES 50TH ANNIVERSARY

The Rhododendron Garden at Hendricks Park celebrated its fiftieth birthday with quite a party. The International Rhododendron Society met in Eugene and rhododendron enthusiasts from all over the world came to see the gardens of our area. Local hybrids that never traveled beyond the county line were visible to guests who came to appreciate all that rhododendrons have to offer. Local breeders and gardeners were able to display their handiwork to visitors who owed their trip to Eugene to our public garden and its ability to persuade the Society to convene within an hour's walk of its border. The memory of pioneers such as James Barto, Del and Rae James, Ruth and Marshall Lyons, and Dr. Phetteplace were honored as their legacies were visited by those who were able to appreciate their contributions.

Whether we visit the Rhododendron Garden at Hendricks Park on a regular basis or not, there is no doubt of its importance to the rhododendron community in the area. The garden also serves as a showcase to introduce new visitors to the beauty of the plant and is often the first introduction that a new devotee gets to the splendor of their cultivation. The garden is a nice introduction to the novice, but the rich history and knowledge that this acreage contains is partly hidden by the lack of available documentation as to the identity of the various plants in the garden or the difficulty of locating a particular plant when staff is not present. Even in this showcase garden, there is room for improvement.

Our current project derives from the need to identify and locate the various rhododendrons in the garden at Hendricks Park. The first phase of the project involves locating the position of each rhododendron currently at the garden on a map of the garden. Our maps are printed on 17" x 22" paper and are flat projections of the garden layout showing the paths and the beds. Orientation of the maps is accomplished by matching up the network of paths through the garden with their representations on the map.

Concurrent with the mapping of the various rhododendrons is the task of identifying each rhododendron in the garden and associating that identity with a mapped rhododendron. In order to do this we rely on existing labels, information from current and former park personnel, and the assistance of volunteers from the local ARS chapter. This task seems Herculean right now and must be divided into small units so that we can identify the plants as we have time. This is currently being accomplished by identifying the plants in bloom so that any unidentified plants can be named by experts who would recognize various rhododendron varieties by their flowers.

Once we have the map of the rhododendrons in the garden and their associated names, we will need to process the information to make it accessible and maintainable from now on. Our current plans are to construct a database that will reside on the computer at the park that will list plants by their identity and location. Although the initial mapping of the plants will be in relationship to landmarks on the map of the garden, these locations will likely need to be enhanced.

Once the database is intact, we will start the process of labeling each plant. This process is still in planning. Various options of labeling are to provide each plant with a physical label, have an indexed map of the garden with each plant identified on a map, or have a hidden electronic tag on each plant that will provide information to an electronic reader. The labeling process will be decided by constraints such as cost, durability, resistance to vandalism, and ease of use.

The entire project is developing. The first few weeks of mapping and identifying mostly went to understanding how to perform this process efficiently and accurately. We need help from members of the ARS in identifying various plants. While Galen and Gordon have already stepped forward to offer the help they can, this process may require nearly weekly identification sessions. We encourage any members who might be able to offer their services of identifying various rhododendrons in the garden to contact Ron Friedland in Eugene at 541-484-7465. An email address can be provided on request.

Our showcase rhododendron garden has developed into a beautiful project that will evolve and engage visitors for generations to come. This is our attempt to have the gardens come of age. We encourage you to lend a hand. Even if all you do is to come along to see the beautiful blooms, the cause of enhancing the Rhododendron Garden will be advanced. We can use your help if you have the time and ability to work with us. We can use your appreciation if you have the sensitivity to enjoy this public display. We can use your good will if you understand the glory of these wonderful plants. Beauty is made to be appreciated, not ignored. Whether you can offer help or not, make the trip to see the Hendricks Park Rhododendron Garden unfold this year. Provide a bridge from the innovations of the pioneers to the inspiration of the generations to come.

Ron Friedland

YAKKIN' AT THE OLD TOOL SHED

God loved the flowers and invented soil.
Man loved the flowers and invented vases.
Anonymous

Greek Classical Elements

AIR WATER AETHER FIRE EARTH

As gardeners, we use air, water, earth, and fire to produce the ultimate foliage, the strongest trunk, and most appealing structure, even the most pleasing canopy to shade our walks. In other words, our work in the garden creates a heavenly aether for ourselves, insects, birds, and other creatures.

And sometimes, if we moderate air and fire and combine water and earth just right, our garden's aether produces a quintessential flower truss that we take to the flower show.

Do we do this for ribbons, awards, and accolades? No. We do it and provide a vase so that others may learn of, and come to love, the floral quintessence of rhododendrons.

Questions? Comments? E-mail me at garden.projects@hotmail.com

TIPS FROM THE OLD TOOL SHED: MIL, my wife, and I are preserving/restoring our wetland prairie habitat. Here are some of the native wet prairie plants that we hope will grow well in the marsh and produce an aether for us and the frogs, birds, butterflies, and bees:

Pacific azalea	<i>R. occidentale</i>	flowers, butterflies
Cascade azalea	<i>R. albiflorum</i>	flowers, fragrance (citrus)
Tufted hairgrass	<i>Deschampsia caespitosa</i>	forage, bird seed
white bog orchid	<i>Plantanthera dilatata</i>	flowers, fragrance (lilac/clove pinks)
soft rush	<i>Juncus effusus</i>	wildlife food/habitat, basketry
Oregon geranium	<i>Geranium oreganum</i>	flowers (purple), butterflies
monkey flower	<i>Mimulus guttatus</i>	flowers (yellow), hummingbirds
Slender cinquefoil	<i>Potentilla gracilis</i>	flowers (yellow)
coneflower	<i>Rudbeckia occidentalis</i>	bees, butterflies, birds (finches)
small fruited bulrush	<i>Scirpus microcarpus</i>	wildlife food/habitat, basketry
ladies tresses	<i>Spiranthes romanzoffiana</i>	flowers (white)
false hellebore	<i>Veratrum</i> sp	foliage, flowers (white/yellow)
Few leaved thistle	<i>Cirsium remotifolium</i> var. <i>odontolepis</i>	bird seed
rose checkermallow	<i>Sidalcea virgata</i>	flowers (pink), butterflies
Oregon sunshine	<i>Eriophyllum lanatum</i>	flowers (yellow), birds, butterflies, bees
goldenrod	<i>Solidago Canadensis</i>	flowers (yellow), bees
Hall's aster	<i>Symphyotrichum hallii</i>	flower (white), butterflies
California compassplant	<i>Wyethia angustifolia</i>	flowers (yellow), foliage, butterflies
splitawn sedge	<i>Carex tumulicola</i>	bird seed, nesting material
Aspen fleabane	<i>Erigeron speciosus</i>	flowers (lavender), butterflies
barestem biscuitroot	<i>Lomatium nudicaule</i>	flowers (yellow)

EUGENE CHAPTER
AMERICAN RHODODENDRON SOCIETY
PO Box 7704
EUGENE, OR 97401

NONPROFIT
US POSTAGE PAID
EUGENE OREGON
PERMIT No. 194



2009 CHAPTER CALENDAR 2010

MAY 23 HINSDALE GARDEN OPEN See Page 2 for important details

JUN 7 PICNIC AND PLANT EXCHANGE AT LLOYD KNOX WATER BOARD PARK across the dam at Leaburg Lake on Hwy 126. Details on page 1.

AUG 16 PICNIC AT DUNROAMIN (Frances Burns / Douglas & Mary Furr) at Noon.
Followed by **TUFA WORKSHOP presented by Douglas Furr**

SEP 10 MEETING & PROGRAM : DAVE ECKERDT of the Willamette Chapter speaking on "GARDEN GEMS OF THE PACIFIC NORTHWEST".

SEP 17-20: WESTERN REGIONAL CONFERENCE, TACOMA, WASHINGTON

OCT 8 MEETING AND PROGRAM. BILL HICKS SPEAKING ON LEPIDOTE RHODODENDRONS

NOV 12 MEETING, PROGRAM AND SPEAKER (To be announced) AND **PLANT AUCTION**

DEC 19 CHRISTMAS PARTY, CAMPBELL CENTER 6:00

JAN 12 JOINT MEETING WITH HARDY PLANT SOCIETY. SPEAKER STEVE HOOTMAN
Note: this is Tuesday night at Agate Hall, not our regular meeting night.